

Financial System

A SOLUTION THAT'S RIGHT ON THE NUMBERS

A financial application specifically designed to meet the needs and challenges of communications companies.

CommSoft's Financial System offers a comprehensive solution that helps today's communication providers with reporting financials accurately and promptly. Ease of use and flexibility are the keys with this system. We help you to build operational efficiencies that ensure complete financial records and comply with federal and state regulations.

GENERAL LEDGER

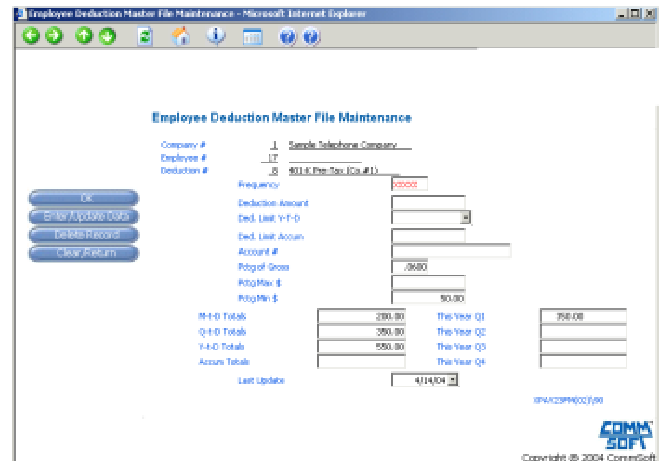
The General Ledger module is the foundation of our Financial System. With this powerful program, you can view and report up to three years of financial transaction dates in real-time. You can also:

- Review account information and details on transactions for a selected account.
- Customize financial statement formats.
- Generate consolidated or combined financial statements.
- Perform your corporate accounting in compliance with Part 32 standards.
- Create standard recurring and general journal entries
- Retain, view, and report on inactive general ledger accounts.
- Locate errors automatically.
- Review entries at the general ledger collection points from other CommSoft modules.

ACCOUNTS PAYABLE

The Accounts Payable module allows you to administer all inter-company and supplier payables via one user-friendly user interface. In addition, you can:

- Access and update purchasing transactions and information through an inter-company purchase journal.
- Automate Purchase Order receiving.
- Assign multiple work orders.
- Process prepaid checks.
- Organize groups of related invoices and satisfy via a single payment.
- Process payments for individual invoices.
- View details on open and paid invoices.
- View and print reports of information on purchase and cash disbursement journals.
- Generate vendor 1099-MISC forms at year-end.
- Automate custom refund processes.



One customer-driven product. One support-minded company.

TIME ENTRY & ACCOUNT SPREADS

The Time Entry & Account Spreads module allows you to track employee time and related costs, and also:

- Add time entry codes specific to your company's business practices.
- Individual time entry codes can be associated with as many as 10 account numbers.
- Allows user to enter time online.
- Print blank employee time sheets for manual recording and signatory approval.
- Define account distributions for labor, overhead, supervisory, non-productive time, etc.
- Automate distribution of one payroll run across multiple companies.
- Spread labor costs based on labor hours, labor dollars, vehicle hours, and material usage.

PAYROLL

The Payroll module enables you to properly manage all issues from paychecks to retirement plans, including the ability to:

- Generate payroll register and paychecks for user-selected pay periods.
- Define voluntary deductions and other non-productive time variables.
- Process 401K and Section 125 voluntary deductions.
- Configure taxability attributes of miscellaneous pay types.
- Process ACH direct payroll deposits.
- Monitor workers' compensation earnings.
- Generate federal quarterly reports and year-end W-2 statements.
- Maintain local, county, state and federal tax tables.

BANK RECONCILIATION

The Bank Reconciliation module allows you to administer single and/or multiple accounts across multiple lines of business. It enables you to:

- Post cash receipt transactions.
- Administer multiple bank accounts.
- Perform online bank account reconciliation.
- Reconcile accounts payable and payroll checks.

WORK ORDER

The Work Order module integrates data from other areas of the Financial and Inventory system, which enables you to make smarter decisions faster. The module enables you to:

- Compile and process information from inventory, general ledger, accounts payable, payroll, and account distributions.
- Generate budgets for materials, labor, overhead and other expenses.
- Define multiple work orders for a single project code.
- Calculate AFUDC interest and distribute through individual work orders.
- Process expenses on a monthly basis and post work order closing to the general ledger.
- View work order transaction details and related general ledger account totals in real-time.

IBM Server *Proven*[™]



Advanced Partner

Other Powerful CommSoft Products Include:

CABS: Carrier Access Billing

CommForce: Mobile Workforce Management

CommNextion: EBPP, Self-Care, and Self-Provisioning Portals

CommView: Real-Time Customer Service Dashboards

CR&CM: Customer Relationship & Campaign Management

iCommVergence: Customer Care, Management, Billing, and Rating

VTC: Service Activation and Business Process Automation